

ROYAL AIRBRUSH

■ SPECIFICATIONS	AB-180
Nozzle diameter:	0.2mm
Fluid Cup capacity:	9cc

■ APPLICATIONS

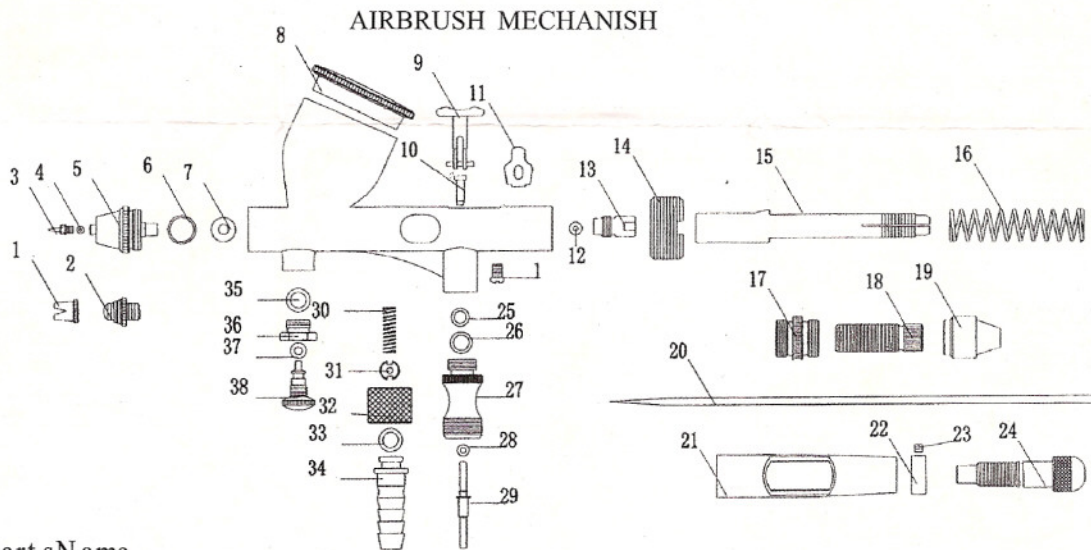
Commercial arts, illustrations, photo retouching, hobby and crafts

■ HOW TO SPRAY

1. Fill fluid in the cup after thinning appropriately.
2. Hold the airbrush lightly in your hand.
3. By pressing the main lever, a stream of air emerges. Then draw it backward gradually for Color atomization.
4. The spray pattern is in accordance with the distance between a work surface and a air brush.
5. For fine line spray, remove the needle cover and hold the air brush near a work surface.

■ MAINTENANCE

Empty the fluid cup and wash with water or solvent by a brush.
 Refill cup with water or solvent, then block the needle cover with a finger and spray. The air flows backward into nozzle to clean the paints remained the air brush.



Part sName

- | | | |
|----------------------------|--------------------------------|-------------------------------|
| 1. Needle Cap | 14. Stopper | 27. Valve Body |
| 2. Nozzle Cap | 15. Needle Chucking guide | 28. Valve rod o-ring |
| 3. Nozzle | 16. spring | 29. Valve Rod |
| 4. O-Ring for Nozzle Cap | 17. Linker | 30. Valve spring |
| 5. Air cap Body | 18. Spring | 31. Valve Screw |
| 6. O-Ring | 19. Needle Chuking Net | 32. Hose Connector NUT |
| 7. O-Ring | 20. Needle | 33. O-Rong for Hose Connector |
| 8. Lid for Color Cup | 21. Standard-Handle Adjustinfg | 34. Hose Connector |
| 9. Operat ion lever | 22. Bush | 35. O-Ring |
| 10. Plug | 23. Filaturu | 36. Setscrew |
| 11. Lever Guide | 24. Adjusting screw | 37. O-Ring |
| 12. Oring for Needle Guide | 25. Lever Guide o-ring | 38. Adjuster |
| 13. Needle Guide | 26. Valve o-ring | |