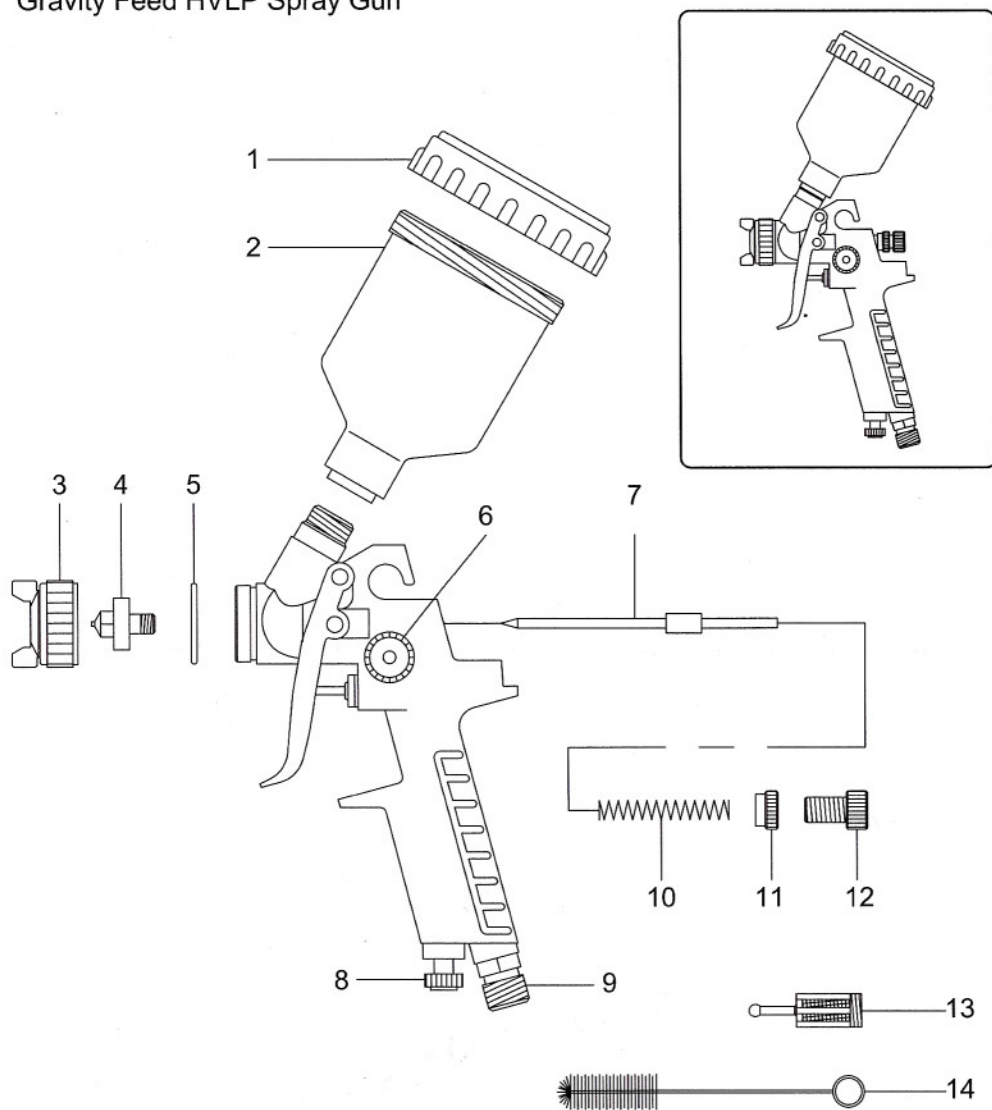


● PART LIST

Gravity Feed HVLP Spray Gun



OPTIONAL (Nozzle size: a: 0.5mm / b: 0.8 mm)

INDEX	DESCRIPTION	INDEX	DESCRIPTION	INDEX	DESCRIPTION
1	Cup cover	6	Pattern adjusting screw	11	Needle adjusting nut
2	Plastic cup	7	Fluid needle	12	Needle adjusting screw
3	Needle cap	8	Air micrometer	13	Optional filter
4	Fluid nozzle	9	Airline connector (PS 1/4")	14	Brush
5	O-ring	10	Needle spring		

OPERATING INSTRUCTIONS

1) Performance and equipment

Acid, various media solutions or paint can be applied to the HVLP Spray Gun. Due to a special design on the air cap, over-spraying problem and particle size can be well controlled by applying 3 bar (43 psi) air pressure at the inlet of the spraying nozzle, air cap will have air pressure at 0.7 bar (10 psi). The HVLP Spray Gun provides quality on particle size control and is suitable to quality demanding work under well ventilated workplace. The quality of the spray particle and the nozzle compares to that of a conventional high-pressure model.

The model applies an adjustable fan control with variable fan widths. A flow control node can be used to attain accurate amount of paint.

2) HVLP Spray Gun Requirement

While the maximum air cap internal pressure (normally at 0.7 bar or 10 psi) at 3 bar (43 psi), the air pressure will not flow through center of the air cap. Moreover, the double measurement on fan control and testing air cap make the air cap internal pressure visible.

Warning:

Never aim spray guns at yourself, people or animals. Solvents and thinners can cause injury. Prior to any repair work the unit must always be disconnected from all circuit. During painting, no open fire, lit cigarettes, non explosion proof bulbs etc. may exist since combustible fumes are present. During painting, breathing masks conforming to regulations must be worn for health protection.

Appropriate ear protection muffs are required. As a sound level of 90 dB(A) can be exceeded when painting under higher pressure levels.

1. Starting

Prior to any operation, especially repair work, the seating of screws must be checked and tightened as required. When repairing, always disconnect the gun from the air pressure circuit and release all pressure.

- Mount the nozzle set tightly (use universal wrench for the paint nozzle), align the air nozzle so that the number stamped into it can be read from the front right way round.
- Before assembly, the air hose should be blown out. The air hose must be solvent-resistant able to stand a pressure of minimum 5 bars (75 psi) and show a total electric resistance 100 million Ohm.
- Prior to shipment, this gun was treated with an anticorrosive agent. Before using the gun, make sure that it is carefully solvent.
- When pulling the trigger, adjust the required atomization pressure. Make a spray pattern on paper to ensure that you use the right pressure and if it is necessary to change pressure accordingly.

2. Adjustment of fan width

To adjust fan width, rotate the regulator. The spray pattern can be altered from flat to round as required.

3. Reduction of material flow

Needle stroke and therefore material flow is infinitely reducible by turning the material flow control screw (unscrew counter nut, adjust and tighten the nut).

4. Regulating air flow with a micrometer

The air should be regulated extremely fine to suit all operational conditions. The micrometer is located parallel to the spraying nozzle body. To adjust the micrometer clockwise will diminish the airflow of fan, and vis-a-vis.

5. Exchanging the nozzle set

When changing to another nozzle size, make sure that the complete nozzle set is exchanged. These parts (consisting of air nozzle, paint nozzle and paint needle) are always supplied in one set. Fix paint nozzle before paint needle.

6. Exchange of self-tensioning packing

To replace paint needle packing, disassemble air cap and paint nozzle before hand.

7. Cleaning and gun care

- After each use, flush the gun thoroughly with cleaning solvent.
- Clean air nozzle with brush provided. Do not immerse the gun in cleaning solvent.
- Blocked artifices should never be cleaned with improper objects; the smallest amount of damage will badly influence the spray pattern.
- To ensure maximum sealing the edge of cup must always be kept clean.
- Apply special grease to remove parts if necessary.